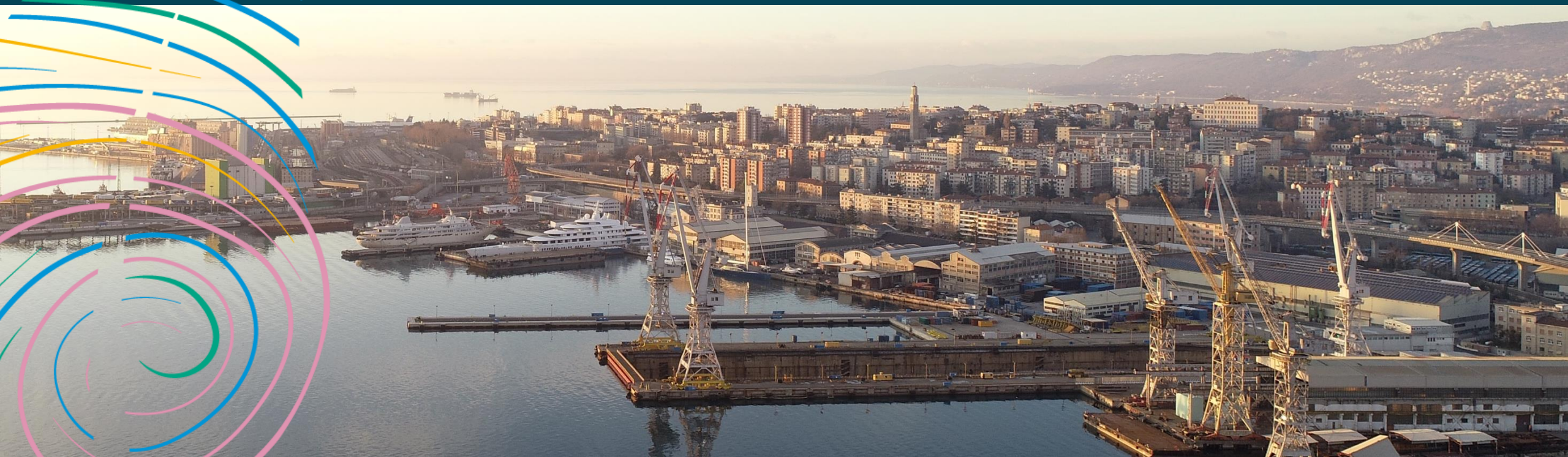


TREASURE

Testing novel environmental
quality measures in and
around Euro-MED ports



TREASURE

Interreg
Euro-MED



Co-funded by
the European Union

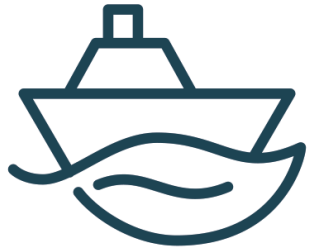


Human activities are causing **unprecedented environmental changes** in coastal and marine ecosystems.

Port areas become both the final accumulation site for chemicals from anthropic activities and a cause of **pollution that is difficult to contain**.

This represents a significant **environmental risk for marine biodiversity** and surrounding areas that TREASURE aims to mitigate.

Objectives



TREASURE is a EU funded project in the context of the Natural Heritage Mission of the Interreg Euro-MED Programme, which focuses on protecting, restoring and valorising the natural resources of the Euro-Mediterranean area.

TREASURE aims to improve **environmental quality** in and around Mediterranean ports by reducing sediment and water pollution.

To this end, project partners will create an **innovative transnational approach** to testing and experiment **new techniques** for the **remediation** of degraded and polluted port areas.



TREASURE challenges

- **GOVERNANCE** (need for cross-sector and cross-cutting governance frameworks to improve environmental quality in port areas)
- **MONITORING ENVIRONMENTAL QUALITY** (need for a common and advanced monitoring framework, able to assess impact and pressure on port environments)
- **INNOVATIVE TECHNOLOGIES** (need to support commercialization and roll-out of new technique to remediate pulled sediments and water).



Project Activities / how will TREASURE do so?

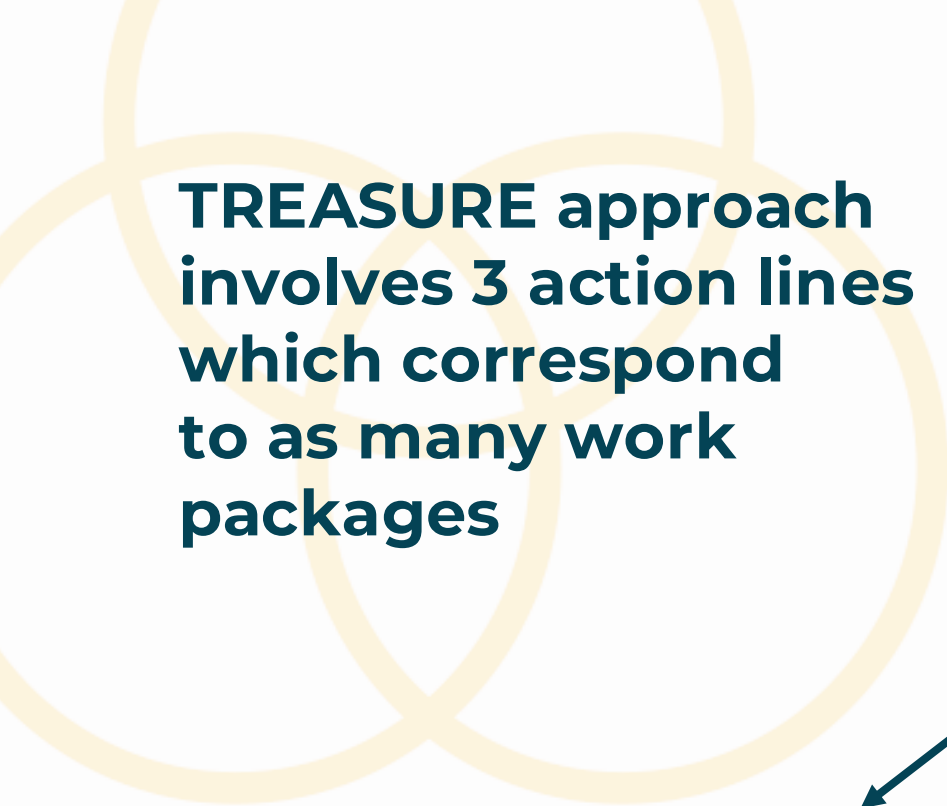
- Creation a **governance** framework;
- Creation of open pilot **laboratories**;
- Elaboration of an integrated **monitoring approach** to environmental quality assessment;
- **Testing of new techniques** for the remediation of degraded and polluted port areas;
- **Mainstreaming** and planning for **transfer** of the TREASURE solution.



Our area of interest


TREASURE operates in several ports, specifically **Port of Valencia** (Spain), **Port of Toulon** (France), **Port of Livorno** (Italy), **Port of La Valletta** (Malta), **Port of Piraeus** (Greece), **Port of Durres** (Albania) and **Port of Bar** (Montenegro) but aims at transferring its results to the overall Mediterranean area.





**TREASURE approach
involves 3 action lines
which correspond
to as many work
packages**

- **To explore our transnational experiences**
- **To understand how we actively engaged stakeholders**
- **To discover practical tools and governance models**
- **To exchange knowledge and lessons learned**

- 
1. **WP1 — Multi-stakeholder, cross-sector governance solutions, designed for the creation and management of territorial labs (mini-labs: capitalization tool), as well as to introduce improvements to policies and regulations**
 2. **WP2 — New approaches to environmental assessment, through the “Lines of Evidence”, for a qualitative evaluation of different compartments (sediments / water / biota) of the port environment**
 3. **WP3 — Identification and Testing of novel techniques for environmental remediation in sediments and water, in and around port areas.**

Programme

Time	Session	Speaker
10:00 – 10:10	Welcome and Introduction to the TREASURE Project	Anna Marconato - CEI-ES
10:10 – 10:30	Governance Model for Environmental Improvement in Ports - Collaborative approaches and decision-making frameworks	Lorenzo Sabatini - ASEV
10:30 – 10:45	Environmental challenges, Governance Framework, Stakeholders' Engagement and Local Agreements in the Port of Valencia	Pablo Palomo – Valencia Port Foundation
10:45 – 11:00	Environmental Challenges, Governance Framework, Stakeholders' Engagement and Local Agreements in the Port of Piraeus	Pavlos Filippidis - Piraeus Port Authority
11:00 – 11:15	Environmental Challenges, Governance Framework, Stakeholders' engagement and Local Agreements in the Port of Livorno	Lorenzo Sabatini - ASEV
11.15 – 11.30	Q&A	

Upcoming opportunities

Webinar 2 – TREASURE Catalogue of Innovative Solutions

- Date: 27 March 2026, 10:00–12:00 CET
- Focus: TREASURE catalogue and innovative solutions tested in the project ports

Webinar 3 – Environmental Impact Assessment: the TREASURE experience

- Date: 7 May 2026, 10:00–11:30 CET
- Focus: Environmental quality assessment matrix (LOE), indicators, and assessment tool

Final Conference in Toulon in JUNE



TREASURE in numbers



TOTAL
BUDGET

€ 2.501.521,50



PROJECT
DURATION

33 months
Until
September
2026



MED PORT AREAS
INVOLVED

7



LEAD PARTNER
Agency for the Development
of the Empolese-Valdelsa



Italian Institute for Environmental
Protection and Research



Pôle Mer Méditerranée –
Toulon Var Technologies



Port of Bar



Transport Malta



Valenciaport Foundation for research,
promotion and commercial studies
of the Valencian Region



Piraeus Port Authority



Durres Port Authority



Central European Initiative -
Executive Secretariat

THANK YOU!



TREASURE

Interreg
Euro-MED



Co-funded by
the European Union